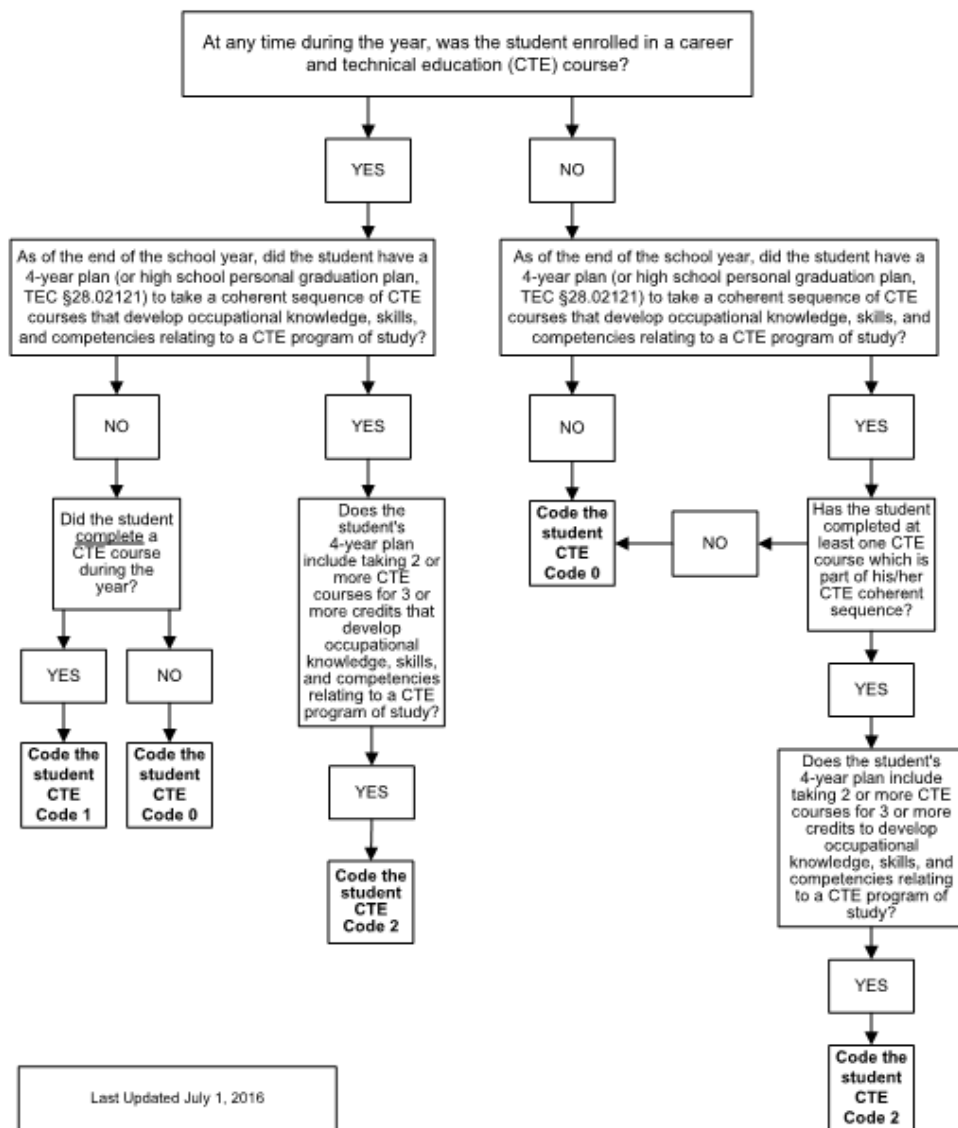


Career and Technical Education Indicator Code Summer Submission Decision Chart (E0031)



ESL-PROGRAM-TYPE-CODE (E1043) indicates whether the student is participating in a state-approved English as a Second Language (ESL) program. An ESL program in grades PK – 8 is a program of intensive instruction in English from teachers either certified or endorsed in ESL who use second language acquisition information to teach LEP students the English Language Proficiency Standards (ELPS). An ESL program in grades 9 – 12 is a program of intensive instruction in English from teachers trained in recognizing and dealing with language differences who use second language acquisition information to teach LEP students the English Language Proficiency Standards (ELPS). [See 19 TAC §89.1210(f).]

****FLEXIBLE-ATTENDANCE-PROGRAM-TYPE-CODE Complex Type**

Indicates the unique type of flexible attendance program to which the student’s flexible attendance is related.